

N.W. 1/4
SECTION 36, T.7N., R.2W., S.L.B.&M.

PREFIX: 19-041

IN TOWN OF PLEASANT VIEW & FARR WEST CITY

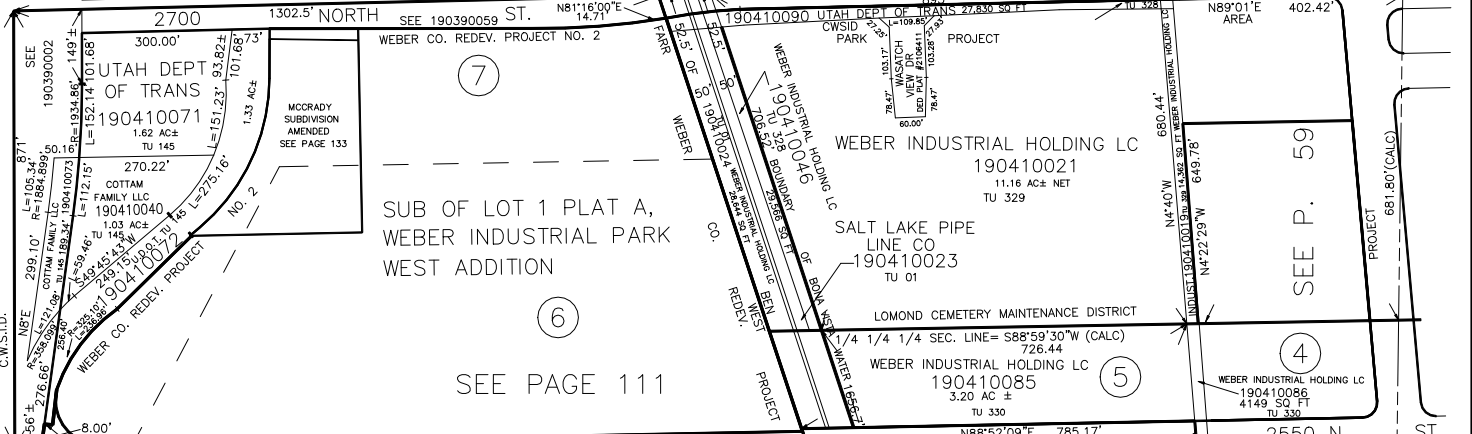
TAXING UNIT: 01,17,58,145,268,328,329,330,331

SCALE 1" = 200'

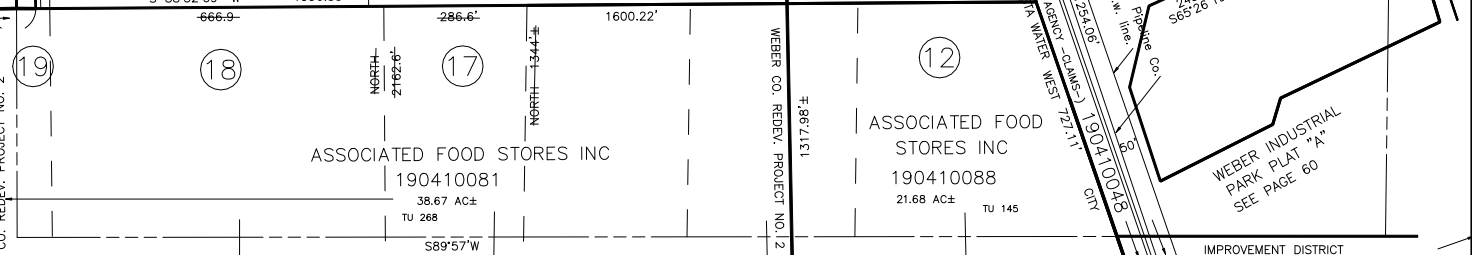
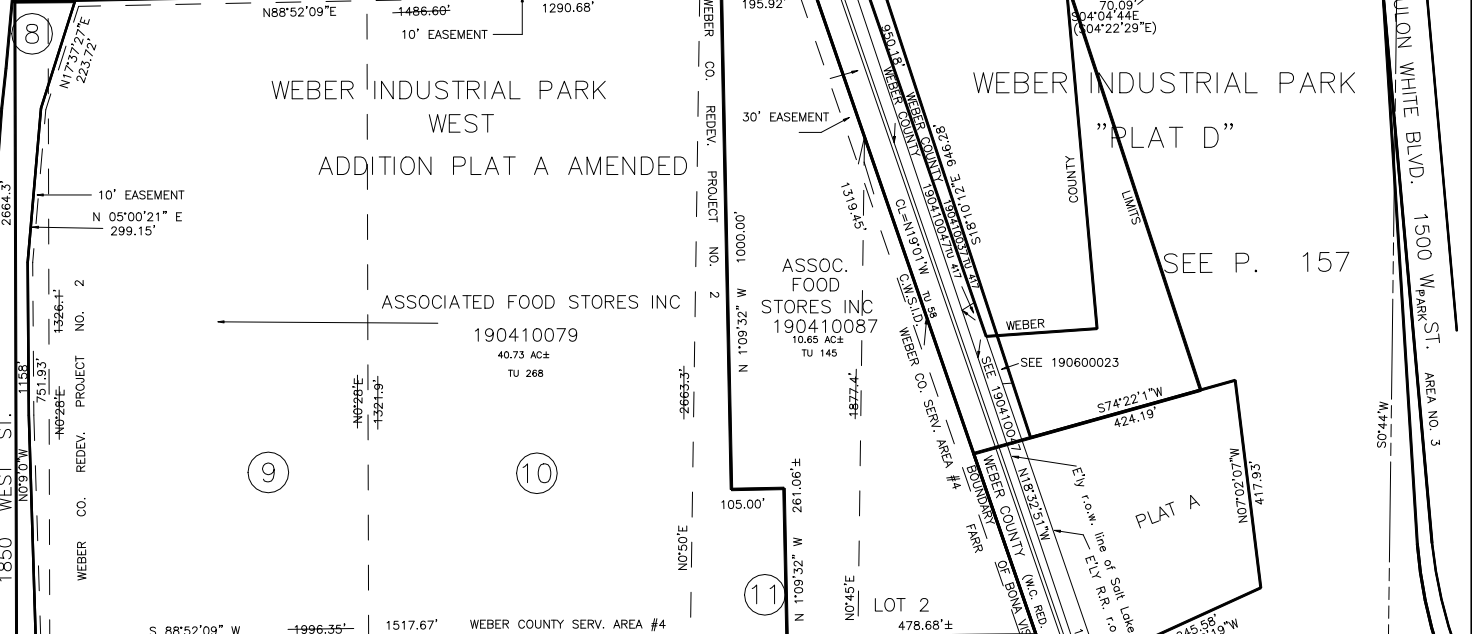
SEE P. 16-3

WEBER COUNTY
190410020
TU 01
N.1/4 COR. SEC. 36

WEBER CO. SERV. AREA #4
190410090 UTAH DEPT OF TRANS 27,830 SQ FT
190410022 TU 01
N88°40'E PLEASANT 2731.8' VIEW WEBER COUNTY CITY
LIMITS 429.3'
N89°01'E AREA 402.42'



2700 NORTH SEE 190390059 ST. N81°16'00"E 14.71'
2550 NORTH ST. NO. 2 N88°52'09"E 1486.66' 1290.68'
10' EASEMENT



190410048
WEBER INDUSTRIAL PARK PLAT "A"
SEE PAGE 60
IMPROVEMENT DISTRICT
SALT LAKE PIPELINE CO. HAS 16.5FT STRIP ALONG R.R. R.O.W. SEE 190410023, 190410038
SALT LAKE PIPE LINE CO RB 4-76 190410038

SEE P. 42

NOTE: LOTS & SECTION DATA, SEE ORIGINAL PLAT IN BOOK 6, P. 68

INTERSTATE HIGHWAY 15 SEE P. 39-1

1850 WEST ST. 1158'

RULON WHITE BLVD. 1500 W PARK ST. AREA NO. 3